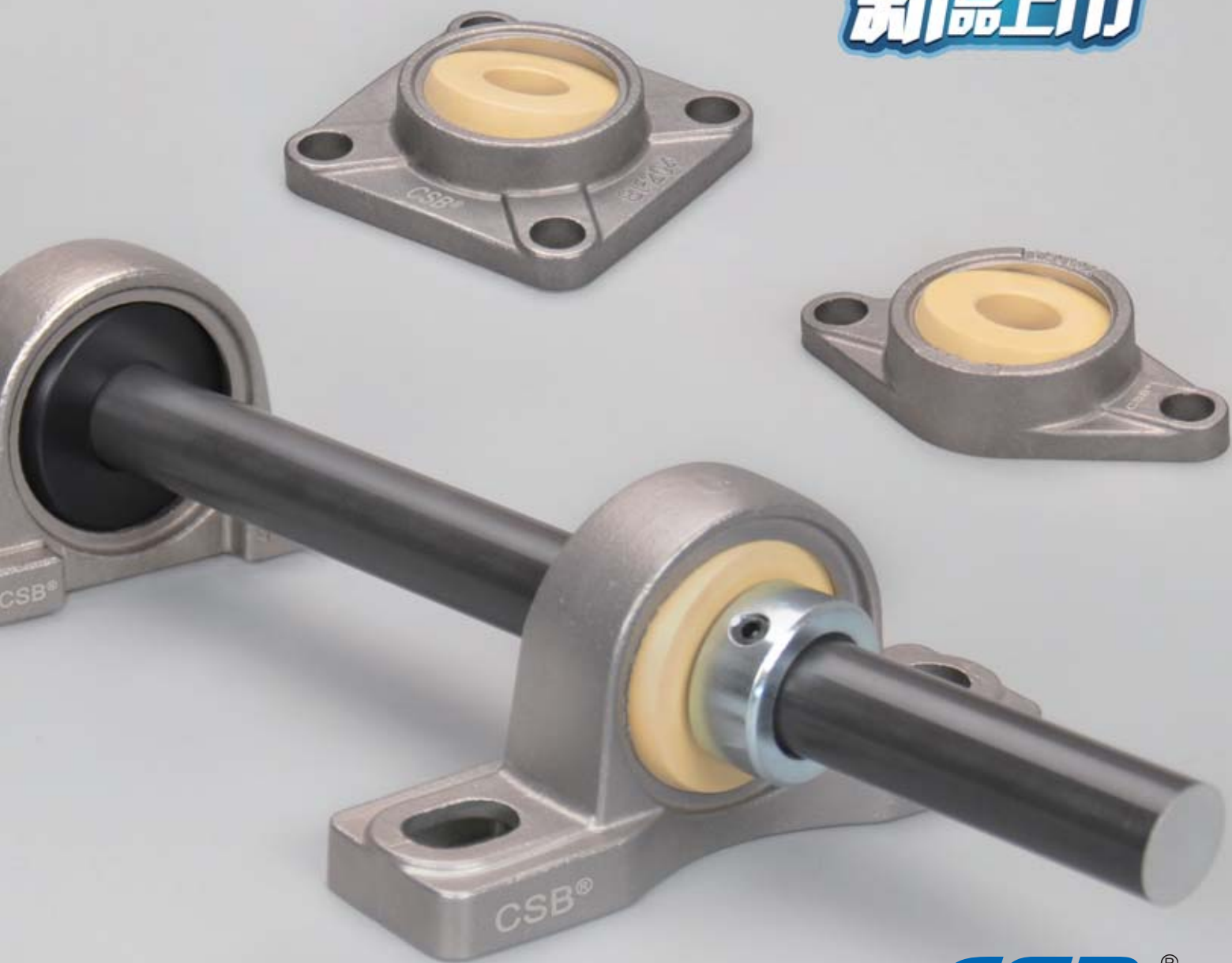


STAINLESS STEEL SPHERICAL BEARINGS

不锈钢基座关节轴承

CSB-BAL®

2021
新品上市





- 成立于1995年，总注册资本2.23亿人民币；
 - 2020年销售额超过6.5亿元人民币，员工800名；
 - 拥有两个生产基地，占地130000m²；
 - 国家级高新技术企业，80项专利；
 - IATF16949:2016、ISO9001:2015、ISO14001:2015、ISO45001:2018认证。
- CSB was established in 1995 and its legal registered capital is 34.4 million US Dollars.
 - CSB turnover in 2020 was more than USD 100 million. Currently there are 800 employees working at CSB.
 - There are 2 facilities covering over 130000m² with extendable area for future enlargement.
 - China National Hi-Tech Enterprise has been granted, 80 patents obtained till now.
 - IATF16949:2016、ISO9001: 2015、ISO14001: 2015 and ISO45001: 2018 management system were certificated.

新型自润滑材料适应环境保护要求 Concern for Environment Requirement

CSB积极应对环境保护的要求，通过多年的努力在各个应用领域都已成功开发了满足RoHS要求的不同材料。

Concern for environmental requirement, CSB has developed various kinds of self-lubricating materials to conform to environment requirement.

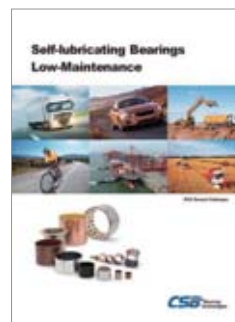
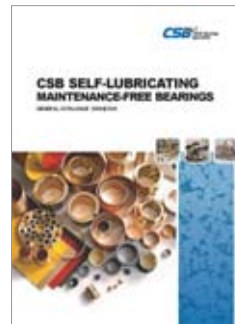
RoHS指令限制的十种有害物质 EC Directive 2011/65/EU (the RoHS Directive)

汞Hg、六价铬Cr⁶⁺、铅Pb、镉Cd、多溴联苯醚PBDE、多溴联苯PBB、邻苯二甲酸二正丁酯DBP、邻苯二甲酸正丁基苯酯BBP、邻苯二甲酸(2-己基)己酯DEHP、六溴环十二烷HBCDD。

This directive restricts the use of hazardous substances. Listed below are CSB products which are all RoHS compliant.



"CSB", "CSB-EPB", "CSB-LIN", "CSB-FWB", "CSB-LMS", "CSB-BAL", "CSB-RPM", "CSB-PEC", "CSB-PCC", "CSB-PEW", "CSB-PPR", "CSB-FLB", "CSB-CPB", "CSB-PCB", "CSB-PYB", "CSB-SRB", "CSB-PRB", "TEFPLAS", "DURARUB" and "DURAFILM" are legally protected trademarks in China and in case also in foreign countries. 中国保护商标。



CSB-EPB® 工程塑料轴承 Plastic Plain Bearings



CSB-LIN® 塑料直线轴承 Plastic Linear Bearings



CSB-PRB® 塑料滚动轴承 Plastic Ball Bearings



CSB-BAL® 塑料关节轴承 Plastic Spherical Bearings



CSB-LMS® 直线驱动系统 Linear Motion Systems



CSB-SRB® 回转支撑轴承 Slewing Ring Bearings



CSB-RPM® 转向器轴承 Steering Rack Bearings



TEFPLAS® 高速滑动轴承 High Speed Sliding Bearings



KER 转角轴承 Knife Edge Rollers



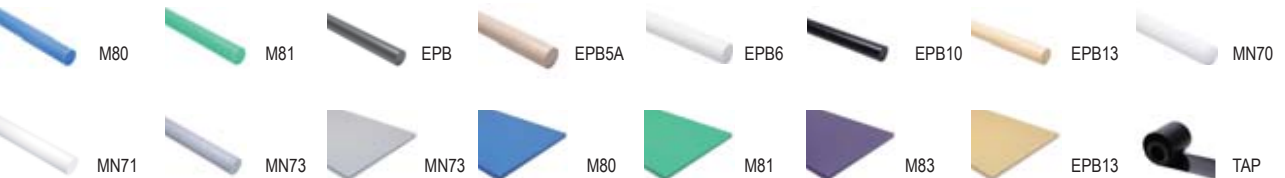
CSB-PEC® 扶梯回转链 Escalator Rotary Chains



工程塑料电缆拖链 Plastic Cable Chains



CSB-SFP® 耐磨半成品 Semi-finished Products



CSB-FWB® 纤维缠绕轴承 Filament-wound Bearings



金属自润滑轴承 Metal Sliding Bearings



为所有工业提供各种自润滑轴承解决方案

Your Partner for Self-lubricating Bearing Application



CSB-EPB[®] 工程塑料轴承 Plastic Plain Bearings

自润滑免维护、耐腐蚀、长服务寿命、轻量化；可选：极低摩擦系数、高载荷、抗静电、高温250℃、FDA食品安全等级。
Maintenance-free dry operation, Absolute corrosion resistance, Long service time and light; Multiple choices: Lowest friction coefficient, High load, Anti-static, High temperature 250℃, FDA food safety grade.



CSB-BAL[®] 塑料关节轴承 Plastic Spherical Bearings

自润滑免维护、耐腐蚀、抗污垢、轻量化；可选：多种结构设计满足不同安装需求。
Self-lubricating and maintenance-free, Corrosion-resistant, Anti-fouling, lightweight; Multiple structural design to meet different installation requirements.



CSB-LIN[®] 塑料直线轴承 Plastic Linear Bearings

干运行无需供油、抗粉尘、无噪音、耐腐蚀、长服务寿命、轻量化；可选：高温250℃、多种安装方式。
Dry operation without oil, Anti-dust, No noise, Corrosion resistance, Longer service time and light; Multiple Assemble types, Highest operation temperature 250℃.



CSB-LMS[®] 直线驱动系统 Linear Motion Systems

自润滑免维护直线驱动系统，直线滑动原件及丝杆螺母均采用高耐磨EPB13材料制成，实现长期干摩擦，低噪音，长服务寿命，适合在粉尘或污水下运行。
Self-lubricating and maintenance-free linear motion system, Linear slider and screw nuts are made of high wear-resistant material EPB13, Dry operation for longer time, lower noise, longer service time and suitable for operation in dust or dirty water.



CSB-SFP[®] 耐磨半成品 Semi-finished Products

采用CSB-EPB[®]高耐磨材料制成，可实现非标轴承的快速加工、小批量制作降低成本；可选：棒材、板材、片材。
The semi-finished products are made of anti-wear and high performance materials CSB-EPB[®], It can be machined non-standard bearings in short time, saving cost for small quantity; Multiple choices: Bar, sheet and tribo-tape.



CSB-PRB[®] 塑料滚动轴承 Plastic Ball Bearings

自润滑免维护、耐腐蚀、轻量化；可选：内外圈、保持架、滚珠多种材料可选。
Maintenance-free, corrosion-resistant, lightweight; Multiple choices: inner and outer ring, cage and ball can be designed different materials freely.



CSB-SRB[®] 回转支承轴承 Slewing Ring Bearings

免维护干运行、低噪音、轻量化；滑动原件可选耐磨材料EPB13、高载荷金属与特氟龙复合材料CSB-11。
Maintenance-free and dry operation, lower noise, lightweight; The slider can be made of wear-resistant material EPB13 or metal and teflon composite material CSB-11 for higher load.



CSB-FWB[®] 纤维缠绕轴承 Filament-wound Bearings

连续长纤维复合材料、干摩擦性能更优越、极高的承载能力、最高静载荷240MPa，特别适合用于高载低速下的摆动。
Long fiber composite material, The best performance for dry operation, High load capacity and max. static load 240MPa, Especially suitable for swing with high load and low speed.

CSB-BAL[®] 不锈钢基座关节轴承

STAINLESS STEEL SPHERICAL BEARINGS

EPB10高温耐磨球体

EPB10 High temperature spherical balls

极高载荷应用
适用于硬轴
适用温度-100/+250℃
High load applications
Suitable for hard shafts
Operation temperature -50/+90℃

EPB13高耐磨球体

EPB13 High wear-resistant spherical balls

极低摩擦系数 Lower friction coefficient
适用于软轴与硬轴 Suitable for soft and hard shafts
适用温度-50/+90℃ Operation temperature -50/+90℃

不锈钢基座

Stainless steel housings

高强度高承载 High strength and load
耐腐蚀 Anti-corrosion
耐高温 High temperature

球体材料 Ball materials

EPB13

- 连续使用温度：-50/+90°C
- 适合干运行、免维护
- 不同轴材料磨损很小
- 较低的摩擦系数
- 适用于软轴



- Continuous working temperature: -50/+90°
- Maintenance-free dry operation
- Small wear off amount against various shaft materials
- Lower friction
- Suitable for soft shaft

EPB10

- 长期使用温度-100/+250°C
- 自润滑、免维护
- 非常耐磨长寿命
- 极好的耐腐蚀性



- Continuous working temperature: -100/+250°
- Maintenance-free, self-lubricated
- Good wear resistance with long service life
- Good chemical resistance

材料性能参数

Materials Performance Parameter

材料性能 Material properties	标准 Standard	单位 Unit	EPB13	EPB10
颜色 Color	-	-	黄色 Yellow	黑色 Black
密度 Density	ISO1183	g/cm ³	1.48	1.42
最大吸湿率 Max. moisture absorption, 50%RH	ISO62	%	0.3	0.1
最大吸水率 Max. water absorption	ISO62	%	1.3	0.5
对钢动摩擦系数 Coefficient of sliding friction(steel)	ITS025	μ	0.05-0.15	0.10-0.25
极限PV值 Max. PV value	ITS026	N/mm ² × m/s	0.40	1.35
弯曲模量 Flexural modulus	ISO178	MPa	2600	10000
弯曲强度 Flexural strength	ISO178	MPa	60	210
最大静载荷 Max. static load	ITS027	MPa	35	125
最大动载荷 Max. dynamic load	ITS028	MPa	14	80
邵氏硬度 Shore hardness	ISO868	D	74	86
连续运行温度 Long-term application temperature	ITS029	°C	+90	+250
短时运行温度 Short-term application temperature	ITS029	°C	+120	+315
最低运行温度 Lowest application temperature	ITS029	°C	-50	-100
导热性 Thermal conductivity	ISO22007	W/m/K	0.25	0.60
线性热膨胀系数 Coefficient of thermal expansion	ISO11359	K ⁻¹ × 10 ⁻⁵	10	5
阻燃等级 Flammability	UL94	Class	HB	V0
体电阻率 Volume resistance	IEC60093	Ω · cm	>10 ¹³	>10 ⁵
面电阻率 Surface resistance	IEC60093	Ω	>10 ¹²	>10 ⁵

*ITS: CSB内部测试标准 CSB company's internal test standards.

**除非特殊说明测试温度为23°C Test temperatures are 23°C unless otherwise stated.

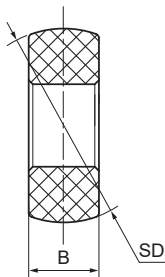
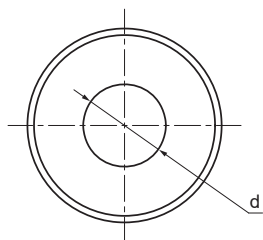
BAL金属关节轴承座球体 Spherical balls for metal bearing housings



产品特性 Product features

- 高负载关节轴承解决方案
 - 标准球体材料EPB13, 可选250℃高温球体EPB10
 - 免维护、自润滑
 - 适用于各种金属轴承座
 - 抗冲击
 - 耐腐蚀
 - 无噪音、重量轻
- High load spherical ball solutions
 - Standard ball material EPB13 available 250°C material EPB10
 - Self-lubricated and maintenance free
 - For various metal bearing housings
 - Vibration dampening
 - Good chemical resistance
 - No noise and light weight

标准规格 Standard specifications



产品编码 Part No.:

BAL-20-17-EPB13

材料 Material

宽度 Width

内径 Inner diameter

产品编码 Part No.	$d^{+0.124}_{+0.04}$ [mm]	$SD^0_{-0.05}$ [mm]	B [mm]	最大静态轴向抗拉强度 Max. axial static tensile strength [N]	最大静态径向抗压强度 Max. radial static compressive strength [N]	重量 Weight [g]
BAL-20-17-EPB13	20	47	17	7500	11500	34
BAL-25-17-EPB13	25	52	17	7500	14500	39
BAL-30-19-EPB13	30	62	19	9500	19500	62
BAL-20-17-EPB10	20	47	17	17000	26000	33
BAL-25-17-EPB10	25	52	17	17000	33000	38
BAL-30-19-EPB10	30	62	19	21000	44000	61

*根据要求提供特殊材料球体 Special material balls upon request

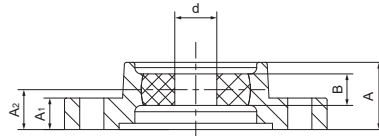
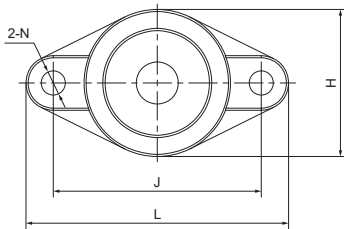
SFL法兰关节轴承 Flange spherical bearings



产品特性 Product features

- 从UC204到UC206
- 标准耐磨材料EPB13球体
可选: 高温250℃球体EPB10
- 不锈钢基座带有2个固定孔
- 自润滑免维护
- 高负载
- 耐脏污
- UC204 up to UC206
- Standard anti-wear composite EPB13 balls
available materials: EPB10 for 250 °C application
- Stainless steel housing with 2 mounting holes
- Maintenance-free dry operation
- High load
- Resistant to dirt

标准规格 Standard specifications



产品编码 Part No.:

SFL204-20-17-EPB13

材料 Material

宽度 Width

内径 Inner diameter

产品编码 Part No.	d +0.124 +0.04 [mm]	B ± 0.1 [mm]	A [mm]	A ₁ [mm]	A ₂ [mm]	H [mm]	N [mm]	J [mm]	L [mm]	最大静态轴向 抗拉强度 Max. axial static tensile strength [N]	最大静态径向抗 压强度 Max. radial static compressive strength [N]	最大调节 角度 Max. pivot angle	重量 Weight [g]
SFL204-20-17-EPB13	20	17	25	11	15	56	12	90	108	7500	11500	19°	204
SFL205-25-17-EPB13	25	17	26	13	16	63	16	99	121	7500	14500	15°	279
SFL206-30-19-EPB13	30	19	30	13	18	74	16	117	141	9500	19500	15°	402
SFL204-20-17-EPB10	20	17	25	11	15	56	12	90	108	17000	26000	19°	203
SFL205-25-17-EPB10	25	17	26	13	16	63	16	99	121	17000	33000	15°	278
SFL206-30-19-EPB10	30	19	30	13	18	74	16	117	141	21000	44000	15°	401

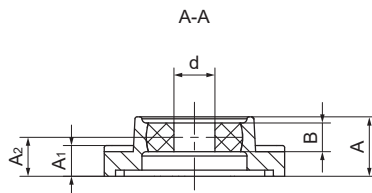
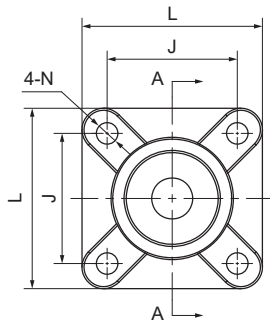
SF法兰关节轴承 Flange spherical bearings



产品特性 Product features

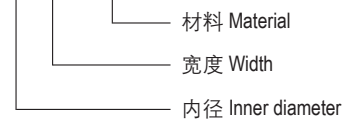
- 从UC204到UC206
- 标准耐磨材料EPB13球体
可选: 高温250℃球体EPB10
- 不锈钢基座带有4个固定孔
- 自润滑免维护
- 高负载
- 耐脏污
- UC204 up to UC206
- Standard anti-wear composite EPB13 balls
available materials: EPB10 for 250 °C application
- Stainless steel housing with 4 mounting holes
- Maintenance-free dry operation
- High load
- Resistant to dirt

标准规格 Standard specifications



产品编码 Part No.:

SF204-20-17-EPB13



产品编码 Part No.	d $+0.124$ $+0.04$ [mm]	B $_{\pm 0.1}$ [mm]	A [mm]	A ₁ [mm]	A ₂ [mm]	N [mm]	J [mm]	L [mm]	最大静态轴向抗 拉强度 Max. axial static tensile strength [N]	最大静态径向抗 压强度 Max. radial static compressive strength [N]	最大调节 角度 Max. pivot angle	重量 Weight [g]
SF204-20-17-EPB13	20	17	25	11	15	12	64	83	7500	11500	19°	294
SF205-25-17-EPB13	25	17	26	13	16	12	70	90	7500	14500	15°	379
SF206-30-19-EPB13	30	19	29	13	18	12	83	103	9500	19500	15°	502
SF204-20-17-EPB10	20	17	25	11	15	12	64	83	17000	26000	19°	293
SF205-25-17-EPB10	25	17	26	13	16	12	70	90	17000	33000	15°	378
SF206-30-19-EPB10	30	19	29	13	18	12	83	103	21000	44000	15°	501

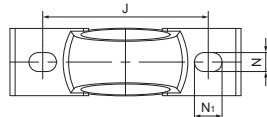
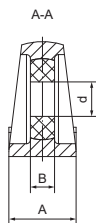
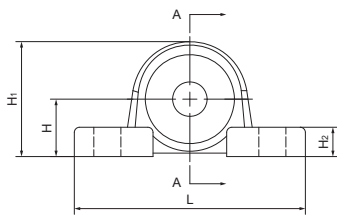
SP关节轴承座 Spherical bearing housing



产品特性 Product features

- 从UC204到UC206
 - 标准耐磨材料EPB13球体
可选: 高温250℃球体EPB10
 - 不锈钢基座带有2个固定孔
 - 自润滑免维护
 - 高负载
 - 耐脏污
- UC204 up to UC206
 - Standard anti-wear composite EPB13 balls
available materials: EPB10 for 250 °C application
 - Stainless steel housing with 2 mounting holes
 - Maintenance-free dry operation
 - High load
 - Resistant to dirt

标准规格 Standard specifications



产品编码 Part No.:

SP204-20-17-EPB13

材料 Material

宽度 Width

内径 Inner diameter

产品编码 Part No.	d +0.124 +0.04 [mm]	B _{±0.1} [mm]	A [mm]	H [mm]	H ₁ [mm]	H ₂ [mm]	N [mm]	N ₁ [mm]	J [mm]	L [mm]	最大静态轴向 抗拉强度 Max. axial static tensile strength [N]	最大静态径向抗 压强度 Max. radial static compressive strength [N]	最大调节 角度 Max. pivot angle	重量 Weight [g]
SP204-20-17-EPB13	20	17	33	33.3	63	11	13	19	95	125	7500	11500	19°	284
SP205-25-17-EPB13	25	17	36	36.5	68	13	13	19	105	133	7500	14500	15°	339
SP206-30-19-EPB13	30	19	42	42.9	80	15	17	23	121	155	9500	19500	15°	522
SP204-20-17-EPB10	20	17	33	33.3	63	11	13	19	95	125	17000	26000	19°	283
SP205-25-17-EPB10	25	17	36	36.5	68	13	13	19	105	133	17000	33000	15°	338
SP206-30-19-EPB10	30	19	42	42.9	80	15	17	23	121	155	21000	44000	15°	521

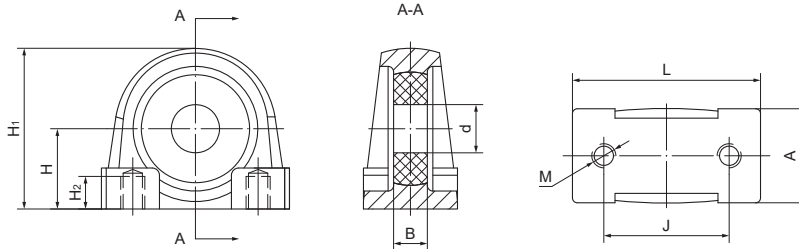
SPA关节轴承座 Spherical bearing housings



产品特性 Product features

- 从UC204到UC206
- 标准耐磨材料EPB13球体
可选: 高温250℃球体EPB10
- 不锈钢基座带有2个固定孔
- 自润滑免维护
- 高负载
- 耐脏污
- UC204 up to UC206
- Standard anti-wear composite EPB13 balls
available materials: EPB10 for 250 °C application
- Stainless steel housing with 2 mounting holes
- Maintenance-free dry operation
- High load
- Resistant to dirt

标准规格 Standard specifications



产品编码 Part No.:

SPA204-20-17-EPB13

材料 Material

宽度 Width

内径 Inner diameter

产品编码 Part No.	d $+0.124$ $+0.04$ [mm]	B ± 0.1 [mm]	A [mm]	M [mm]	H [mm]	H ₁ [mm]	H ₂ [mm]	J [mm]	L [mm]	最大静态轴向 抗拉强度 Max. axial static tensile strength [N]	最大静态径向抗 压强度 Max. radial static compressive strength [N]	最大调节 角度 Max. pivot angle	重量 Weight [g]
SPA204-20-17-EPB13	20	17	35	M10x1.5	30.2	60	11	52	72	7500	11500	19°	134
SPA205-25-17-EPB13	25	17	37	M10x1.5	36.5	71	12	56	79	7500	14500	15°	529
SPA206-30-19-EPB13	30	19	44	M14x2	42.9	82	13	66	89	9500	19500	15°	642
SPA204-20-17-EPB10	20	17	35	M10x1.5	30.2	60	11	52	72	17000	26000	19°	133
SPA205-25-17-EPB10	25	17	37	M10x1.5	36.5	71	12	56	79	17000	33000	15°	528
SPA206-30-19-EPB10	30	19	44	M14x2	42.9	82	13	66	89	21000	44000	15°	641

LR锁紧环 Locking rings

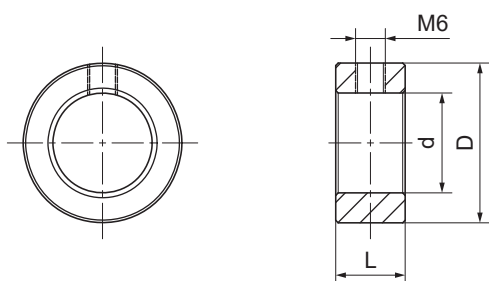


产品特性 Product features

- 尺寸范围: 20mm, 25mm, 30mm
- 标准材料: 镀锌钢, 可选不锈钢与铝合金
- 配合关节轴承座
- 带锁紧螺钉

- Dimension range: 20mm, 25mm, 30mm
- Standard material: Galvanized steel
available material: stainless steel and aluminum alloy
- Used with spherical bearings
- With locking screw

标准规格 Standard specifications



产品编码 Part No.:

LR-20-32-14-C

C: 镀锌钢 Galvanized steel

A: 铝合金 Aluminum alloy

E: 不锈钢 Stainless steel







宽度 Width

外径 Outside diameter





内径 Inner diameter

产品编码 Part No.	d H7 [mm]	D [mm]	L [mm]	重量 Weight [g]
LR-20-32-14-C	20	32	14	54
LR-25-40-16-C	25	40	16	96
LR-30-45-16-C	30	45	16	110
LR-20-32-14-E	20	32	14	54
LR-25-40-16-E	25	40	16	96
LR-30-45-16-E	30	45	16	110
LR-20-32-14-A	20	32	14	54
LR-25-40-16-A	25	40	16	96
LR-30-45-16-A	30	45	16	110





CSB-PCC[®] 微型电缆拖链 Micro cable chains

系列 Series	开启原理 Opening principle	内高 Hi Inner height [mm]	内宽 Bi Inner width [mm]	弯曲半径 R Bend radius [mm]
C01微型电缆拖链 Micro cable chains, Closed design				
沿拖链外侧横杆不可打开 For the smallest applications. One-piece, non-openable				
		07-15	7-50	15-38
C11易填充微型电缆拖链 Micro cable chains, Opening design				
易填充电缆线，内侧横杆为分离式设计 Fill the cable quickly and easily; Split crossbar along the inner radius				
		05-10	5-30	10-38
C21可打开微型电缆拖链 Micro cable chains, Openable along the outer radius				
沿拖链外侧方向打开 Fill the cable quickly and easily; Openable along the outer radius				
		15-20	16-50	28-48

CSB-PCC[®] 通用型电缆拖链 Universal cable chains

系列 Series	开启原理 Opening principle	内高 Hi Inner height [mm]	内宽 Bi Inner width [mm]	弯曲半径 R Bend radius [mm]
C02半封闭 Half enclosed design				
沿拖链内外侧方向可打开 For almost any application. Crossbars removable along the inner and outer radius				
		25-45	50-200	55-250
C12全封闭 Fully enclosed design				
全封闭 - 沿拖链内外侧方向可打开 Fully enclosed design. Shelves can be removed from the inner and outer radius				
		25-45	50-200	55-250







CSB-PCC[®] 重载型电缆拖链 High load cable chains

系列 Series	开启原理 Opening principle	内高 Hi Inner height [mm]	内宽 Bi Inner width [mm]	弯曲半径 R Bend radius [mm]
C03半封闭 Half enclosed design				
每节带横杆 - 加强型 Strong chain with crossbars every link				
		32-56	50-200	50-250
C13全封闭 Fully enclosed design				
全封闭 - 沿拖链内外侧方向可打开 Fully enclosed design. Shelves can be removed from the inner and outer radius				
		32-56	50-200	50-250




CSB-PCC[®] 静音电缆拖链 Quiet cable chains

系列 Series	开启原理 Opening principle	内高 Hi Inner height [mm]	内宽 Bi Inner width [mm]	弯曲半径 R Bend radius [mm]
C04 静音型电缆拖链 Quiet and cleanroom cable chains				
特殊结构与小节距设计静音无尘运行 Special design and small pitch for quite and cleanroom, Openable along the inner and outer radius				
		28	30-60	55-150

CSB-PCC[®] 抗静电电缆拖链 ESD cable chains






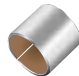




系列 Series	开启原理 Opening principle	内高 Hi Inner height [mm]	内宽 Bi Inner width [mm]	弯曲半径 R Bend radius [mm]
C01E 抗静电微型电缆拖链 ESD micro cable chains, Closed design				
沿拖链外侧横杆不可打开 For the smallest applications. One-piece, non-openable				
		07-15	7-50	15-38
C21E 抗静电可打开微型电缆拖链 ESD micro cable chains, Openable along the outer radius				
沿拖链外侧方向打开 Fill the cable quickly and easily; Openable along the outer radius				
		15-20	16-50	28-48
C02E 抗静电半封闭 ESD half enclosed design				
沿拖链内外侧方向可打开 For almost any application. Crossbars removable along the inner and outer radius				
		25-45	50-200	55-250

CSB-PCC[®] 附件 Accessories

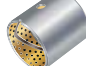


系列 Series	开启原理 Opening principle	内高 Hi Inner height [mm]	内宽 Bi Inner width [mm]
分隔片 Strain relief separators			
	竖分隔片 Vertical separators	可安装在横杆任意位置 Can be placed at any point in the horizontal separators	25-56
应力件 Strain relief elements			
	C型支架 C-profile supporter	铝制C型支架采用螺丝固定 Aluminum C-profile supporter assembled with screws	C02: 57-250 C03: 50-300
	消除应力元件 Tiewrap elements	可直接嵌入C型槽使用 Tiewrap elements with clip-on connection for C-profile supporter	

*请登录我们的网站查询 please visit our website: www.csb-ep.com

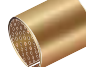


金属塑料复合自润滑轴承 Metal-polymer composite bearings

CSB-50	钢+多孔铜粉+PTFE/添加物 Steel + bronze powder + PTFE/filler	自润滑 Self-lubricating		
CSB-10DH	钢+多孔铜粉+PTFE/铜粉 Steel + bronze powder + PTFE/bronze powder	自润滑 Self-lubricating		
CSB-50MP	钢+多孔铜粉+PTFE/含氟树脂 Steel + bronze powder + PTFE/fluoropolymer	自润滑 Self-lubricating		
CSB-40	钢+多孔铜粉+PTFE/纤维 Steel + bronze powder + PTFE/Fibre	自润滑 Self-lubricating		
CSB-11	铜+多孔铜粉+PTFE/添加物 Bronze + bronze powder + PTFE/filler	自润滑 Self-lubricating		
CSB-25	铝+PTFE Aluminum + PTFE Tape	自润滑 Self-lubricating		
CSB-FR	铜网+PTFE/固体润滑剂 Bronze mesh + PTFE/Solid lubricants	自润滑 Self-lubricating		
CSB-20	钢+多孔铜粉+改性聚甲醛 Steel + bronze powder + POM	边界润滑 Boundary lubricating		
CSB-80	钢+多孔铜粉+PEEK/添加物 Steel + bronze powder + PEEK/filler	边界润滑 Boundary lubricating		


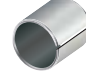

双金属卷制类复合轴承 Bi-metallic composite bearings

CSB-800	钢+铜铅合金粉 Steel + Lead bronze powder	持续给油 Conventional lubrication		
CSB-820	钢+无铅铜合金粉 Steel + Lead-free bronze powder	持续给油 Conventional lubrication		

青铜基卷制类轴承 Bronze wrapped bearings

CSB-090	铜基卷制轴承 Bronze wrapped bearings	持续给油 Conventional Lubrication		
CSB-T90	铜基卷制轴承 Bronze wrapped bearings	持续给油 Conventional Lubrication		
CSB-09G	含固体润滑剂铜基卷制轴承 Bronze wrapped bearings with graphite	起始润滑 Initial lubricating		

金属自润滑轴承 Metallic self-lubricating bearings

CSB650	铜基镶嵌型固体润滑轴承 Cast bronze with graphite plug	自润滑 Self-lubricating		
CSB650GT	钢基铜合金镶嵌型固体润滑轴承 Steel shell cast bronze with graphite plug	自润滑 Self-lubricating		
CSB250	铸铁镶嵌型固体润滑轴承 Cast iron with graphite plug	自润滑 Self-lubricating		
CSB85H	粉末烧结弥散型固体润滑轴承 Powder metallurgy sintered with solid lubricants	自润滑 Self-lubricating		
CSB850BM	钢基铜合金弥散型固体润滑轴承 Metal backed bronze powder with solid lubricants	自润滑 Self-lubricating		
CSB850S	钢基铁镍合金弥散型固体润滑轴承 Metal backed Fe-Ni sintered alloy with solid lubricants	自润滑 Self-lubricating		

声明:

本产品目录中的信息数据是基于我们当前对CSB[®]产品的现有了解, 仅作为用户设计参考使用; 本产品目录中的信息数据不能直接引用至用户实际工况。CSB[®]建议用户通过特定的试验来验证CSB[®]产品是否适用于用户实际工况。对于使用CSB[®]产品所可能导致的任何损失, CSB[®]公司不承担赔偿责任。由于材料和产品技术不断更新, 我们保留变更产品信息数据的权利。

Acknowledgement:

The information and data, contained in the catalogue, are induced by our understanding of the stated products. These information and data are only references during the user designation and application. The designation and application data provided by CSB[®] could not be directly applied to the real application conditions. A specific test is recommended for the practical application environment to ensuring the suitable use of CSB[®] products. Any damages or lost caused by improper use of CSB[®] bearings will not be warranted by CSB[®]. Due to the materials and techniques are continuously updated, we reserve the right to change the necessary data and information without advanced notice in time.

Http: //www.csb-ep.com

浙江长盛塑料轴承技术有限公司
地址: 浙江省嘉善惠民街道汾湖路6号
邮编: 314100
Tel: 0573-84186133/84185527
Fax: 0573-84185517
E-mail: sales@csb-ep.com

Zhejiang CSB Plastic Bearing Technology Co.,Ltd.
Add: No.6, Fenhu Road, Huimin Sub-district, Jiashan, Zhejiang, China
Zip Code: 314100
Tel: 0086 573 84187009/84183318
Fax: 0086 573 84185517
E-mail: sales@csb-ep.com

总部: 浙江长盛滑动轴承股份有限公司
地址: 浙江嘉善经济开发区鑫达路6号
Http: //www.csb.com.cn

Zhejiang Changsheng Sliding Bearing Co., Ltd.
Add: No.6 Xinda Road, Economic Development Zone,
Jiashan, Zhejiang, China.

CSB全球 CSB Global

▣ **CSB in Germany**

CSB Gleitlager GmbH
Add: Meierstr.34-36,D-32120
Hiddenhuasen
Tel: +49(0)5223-985069-0
Fax: +49(0)5223-985069-0
Web: www.csb-gleitlager.de
E-mail: info@csb-gleitlager.de

▣ **CSB in France**

CSB Bearing France
Add: 3,Boulevard Eugene Marie 27800
Brionne, France
Tel: +33-232-433276
Fax: +33-970-063257
Web: www.csb-bearings.de
E-mail: p.mouclier@csb-bearings.fr

▣ **CSB in America**

CSB Americas Inc.
Add: 493 Mission St. Carol Stream,
Chicago,IL 60188,USA
Tel:+1-248-630-9082
Web: www.csbamerica.com
Email: sales@csbamerica.com

▣ **CSB in Finland**

SKS Mekaniikka Oy
Add: Martinkyläntie
50 FI-01720
Vantaa, Finland
Tel: +358 20 764 5000
Web: www.sks.fi
E-mail: sales.mekaniikka@sks.fi

▣ **CSB in Turkey**

O-Pak İthalat ve İhracat Ltd. Sti.
Add: Perpa Ticaret Merkezi A-Blok Kat 5
No: 282-284-286 Okmeydanı
No: 34384 İstanbul Turkey
Tel: +90-212-222 57 00/221 53 15
Fax: +90-212-222 56 99/221 23 18
Web: www.o-pak.com.tr
E-mail: a.arevyan@o-pak.com.tr

▣ **CSB in India**

CSB Sliding Bearing (India) PVT. LTD.
Add: Akash Deep Building Suite 206
Second Floor 26-A, Barakkhamba Road
New Delhi-1 10001, India
Tel: +91-11-66302220/21
Fax: +91-11-23715557
Web: www.csbslidingbearings.com
E-mail: info@csbslidingbearings.com

▣ **CSB in Sweden**

D&E Bearing AB
Add: Himmelsbodavägen
9 SE-147 39
Tumba, Sweden
Tel: +46 8 4474050
Fax: +46 8 4474060
Web: www.debearings.se
E-mail: johan@debearings.se

